



northern tier
regional planning
& development
commission

Serving Bradford, Sullivan,
Susquehanna, Tioga, and
Wyoming Counties

2024-2025 REGIONAL IMPACT

BUSINESS EDUCATION

PARTNERSHIP

17,175

student interactions supported by Northern
Tier's BEP efforts in the school year

17%

83%

K-6
Students

7-12
Students



166

businesses connected
to schools

36

STEM/STEAM
events for
students



21
participating schools

PA CAREERLINK®

13,600+

business services provided in the
Northern Tier through PA CareerLink®

3,300+

jobseeker services provided



96%

rate of **satisfaction** for employers and
jobseekers using CareerLink® services

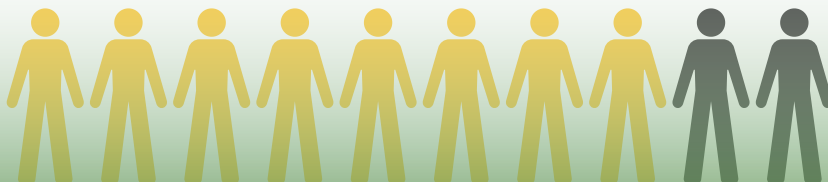
WORKFORCE PROGRAMS



7,691

average of exited Youth,
Adult, and Dislocated Worker
participants' quarterly
median earnings

That's 114% of the Northern Tier's
state-established goal!



79%

average of Youth, Adult and Dislocated Worker
participants exited the program, gainfully employed

CONNECT WITH US: 570.265.9103
or toll free 888.868.8800

www.northerntier.org | info@northerntier.org

312 Main Street
Towanda, PA 18848



Scan for
website



northern tier
regional planning
& development
commission

Serving Bradford, Sullivan,
Susquehanna, Tioga, and
Wyoming Counties

2024-2025 REGIONAL IMPACT

INTERNATIONAL TRADE

ASSISTANCE

39

businesses assisted

aggregating

\$15.5M

in international sales



supporting

79

jobs

BUSINESS FINANCING

102

businesses assisted, spanning

\$452K

in loans dispersed - leveraging

\$1.9M

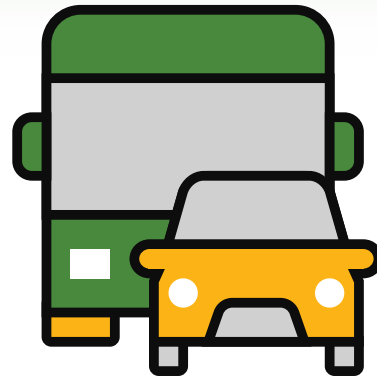


supporting

108

jobs

TRANSPORTATION PLANNING



\$131M

project dollars let,
spanning

51

projects

GOVERNMENT CONTRACTING

174

businesses assisted

\$6.3M

in government sales



ASSISTANCE

supporting

34

jobs

COMMUNITY DEVELOPMENT

\$5.3M

grant funds
were received,
which leveraged

\$1.2M

CONNECT WITH US: 570.265.9103
or toll free 888.868.8800

www.northerntier.org | info@northerntier.org

312 Main Street
Towanda, PA 18848



Scan for
website

