



northern tier  
regional planning  
& development  
commission

Serving Bradford, Sullivan,  
Susquehanna, Tioga, and  
Wyoming Counties

# 2023-2024 REGIONAL IMPACT

## BUSINESS EDUCATION

### PARTNERSHIP

**13,788**

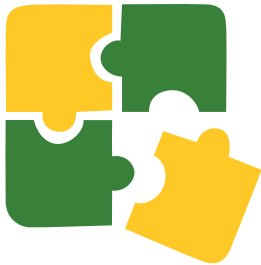
student interactions supported by Northern Tier's BEP efforts in the 2023-2024 school year

18%

82%

K-6  
Students

7-12  
Students



**272**

businesses connected  
to schools

**24**

STEM/STEAM  
events for  
students



## PA CAREERLINK®

**12,700+**

business services provided in the  
Northern Tier through PA CareerLink®

**3,000+**

jobseeker services provided



**98%**

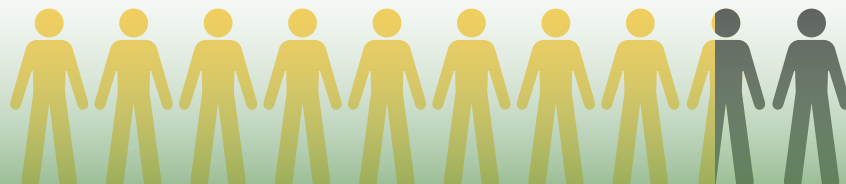
rate of **satisfaction** for employers and  
jobseekers using CareerLink® services

## WORKFORCE PROGRAMS

**\$ 8,218**

average of exited Youth,  
Adult, and Dislocated Worker  
participants' quarterly  
median earnings

That's 125% of the Northern Tier's  
state-established goal!



**82%** average of Youth, Adult and Dislocated Worker  
participants exited the program, gainfully employed

CONNECT WITH US: 570.265.9103  
or toll free 888.868.8800

[www.northerntier.org](http://www.northerntier.org) | [info@northerntier.org](mailto:info@northerntier.org)

312 Main Street  
Towanda, PA 18848





northern tier  
regional planning  
& development  
commission

Serving Bradford, Sullivan,  
Susquehanna, Tioga, and  
Wyoming Counties

# 2023-2024 REGIONAL IMPACT

## INTERNATIONAL TRADE

### ASSISTANCE

**27**

businesses assisted

aggregating

**\$17.2M**

in international sales



supporting

**88**

jobs

## BUSINESS FINANCING

**103**

businesses assisted, spanning

**\$1.41M**

in loans dispersed - leveraging

**\$1.35M**

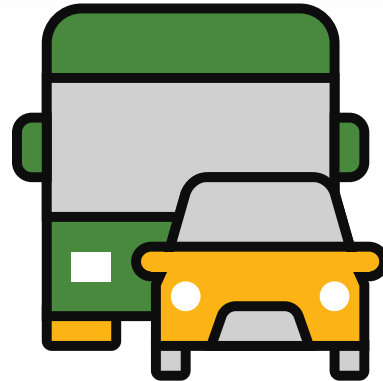


supporting

**324**

jobs

## TRANSPORTATION PLANNING



**\$61.9M**

project dollars let,  
spanning

**36**

projects

## GOVERNMENT CONTRACTING

**176**

businesses assisted

**\$4.9M**

in government sales

### ASSISTANCE

supporting

**21**

jobs



## COMMUNITY DEVELOPMENT

**\$2.8M**

grant funds  
were received,  
which leveraged

**\$1.2M**

CONNECT WITH US: 570.265.9103  
or toll free 888.868.8800

www.northerntier.org | info@northerntier.org

312 Main Street  
Towanda, PA 18848



Scan for  
website