



*Northern Tier*

# Regional Plan Updates

**Presentation  
October 2018**

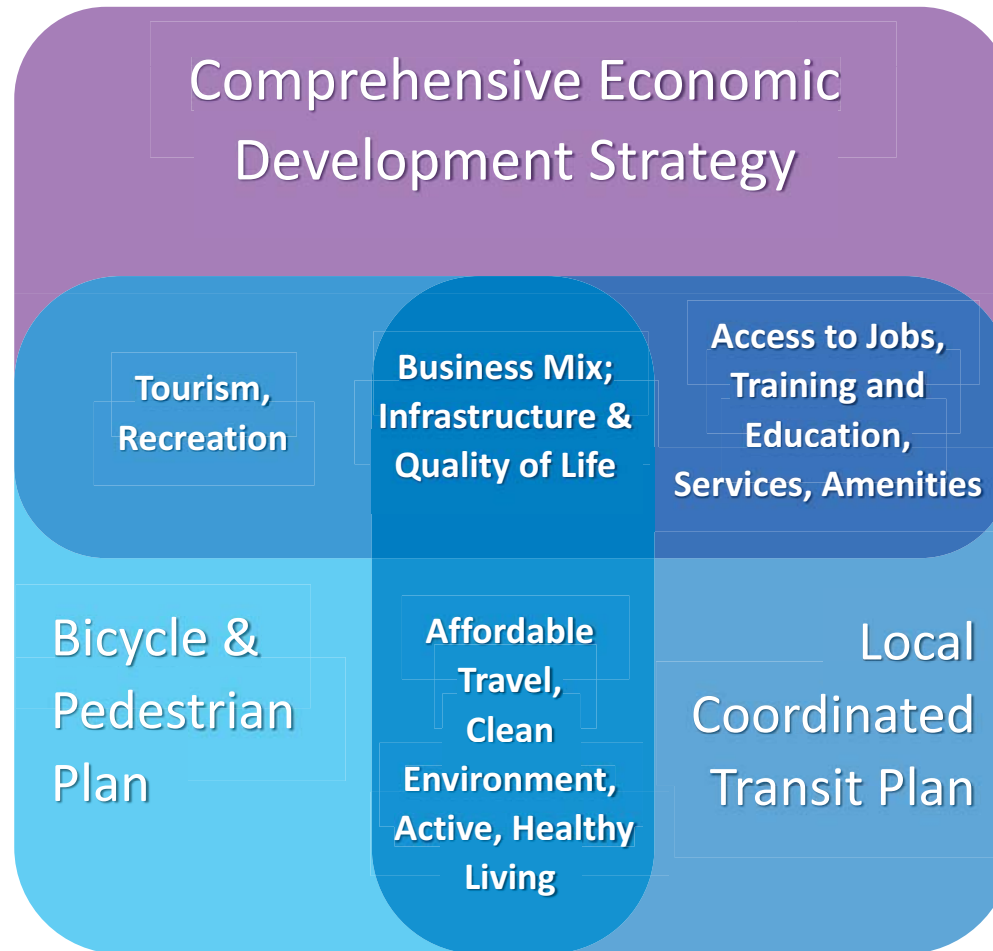


# 3 Plan Updates

Our regional plans for transportation and economic development...

- **Prioritize** our current needs
- **Envision** attainable future outcomes
- **Describe** local and regional action steps
- **Position** us for state and federal funding

# 3 Plan Updates



Our regional plans work together to align improvements in access, infrastructure, and amenities for our communities and economy.

# Comprehensive Economic Development Strategy

## Conditions & Needs

- Economic concentration in **extractive industries**
- **High unemployment**
- Declining and aging **population**
- **Low** workforce **productivity**
- **Limited infrastructure:** telecommunication s and data, natural gas, and transportation
- Abundant **natural resources**

## Priorities

- ◆ **Expand** broadband for internet access
- ◆ **Renew and refocus** workforce development programs
- ◆ **Enhance** tourism assets and promotion
- ◆ **Revitalize** communities

## Outcomes

## Actions

### We Aspire to Have...

A sustainable, diversified economy that weathers the ebbs and flows of the energy and resource extraction industries, and the downturn in the agricultural industry.



# Comprehensive Economic Development Strategy

## Conditions & Needs

## Priorities

## Outcomes

## Actions

- ◆ Expand **broadband** for internet access – 0-24 months
  - ◇ Feasibility study of supply (transmission capacity) and demand
  - ◇ Funding; implementation
- ◆ Renew and refocus **workforce development** programs – 0-5 years
  - ◇ Outreach to industry
  - ◇ Market careers to students and parents
  - ◇ Revise student programs for career development
- ◆ Enhance **tourism** assets and promotion – 0-24 months
  - ◇ Develop the regional trail network
  - ◇ Identify and recruit business
  - ◇ Expand agritourism
- ◆ Revitalize **communities** – 0-5 years
  - ◇ Identify essential features of communities gaining young people
  - ◇ Improve walkability
  - ◇ Occupy new uses in older buildings

# Local Coordinated Transit Plan

## Conditions & Needs

- **Varied services** across 5 counties
- **Numerous providers**; varied program assistance
- Demand for **out-of-county travel**
- Demand for **medical and other quality-of-life travel**
- **Infrastructure** that supports services and use
- **New infrastructure** to “build in” service options

## Priorities

- ◆ **Improve** Service Awareness & Traveler Information
- ◆ **Enhance** Infrastructure & Amenities in Core Communities
- ◆ **Optimize** service analysis, expansion and coordination

## Outcomes

## Actions

### We Aspire to Have...

Affordable, efficient, reliable public transportation services throughout the region, including scheduled bus service for all types of passengers) that is visible and well-connected to bicycle and pedestrian systems in the core communities it serves.

# Local Coordinated Transit Plan

Needs

Priorities

Outcomes

Actions

- ◆ Develop **user-friendly transit materials**. – 0-2 years
- ◆ **Educate trip generators**. – 0-2 years and ongoing
- ◆ **Centralize transportation service data**; make it available as a one-stop online information source. – 3-4 years
- ◆ Improve coordination of **roadway maintenance** schedules. – 0-2 years
- ◆ Install **bus stop** signage and shelters; evaluate sidewalks, curb cuts; connect transit to trails and bike paths; install wayfinding signage to/from transit. – 0-5 years
- ◆ Develop **model policies/ordinances** to ensure new development accommodates public transportation service access. – 0-2 years
- ◆ Conduct **studies and pilot service routes** to improve efficiencies and expand services. – Ongoing
- ◆ **Partner** to promote services, coordinate services, eliminate duplication of services and expand services for consumers. - Ongoing
- ◆ **Explore rider interest** in non-traditional transportation services, e.g. vanpooling, carpooling, and transportation network companies. – 2-5 years

# Bicycle and Pedestrian Plan

## Conditions & Needs

- Use of designated and other **roads for bicycling**
- **Few** bicycling and pedestrian reported **crashes**
- **Sidewalk systems** in ~40 communities
- Growing number of **off-road trails**; more concepts identified
- **Low regard** for bicycling and walking as transportation

## Priorities

- ◆ **Promote and expand** safe locations for on-road bicycling
- ◆ **Maintain and extend** community sidewalk systems
- ◆ **Develop and interconnect** off-road trails
- ◆ **Promote** safety and mutual respect among all travelers

## Outcomes

## Actions

### We Aspire to Have...

Connections enabling people to walk or bicycle to reach local, daily destinations and where they can walk or bicycle in the scenic Northern Tier landscape.



# Bicycle and Pedestrian Plan

Needs

Priorities

Outcomes

Actions

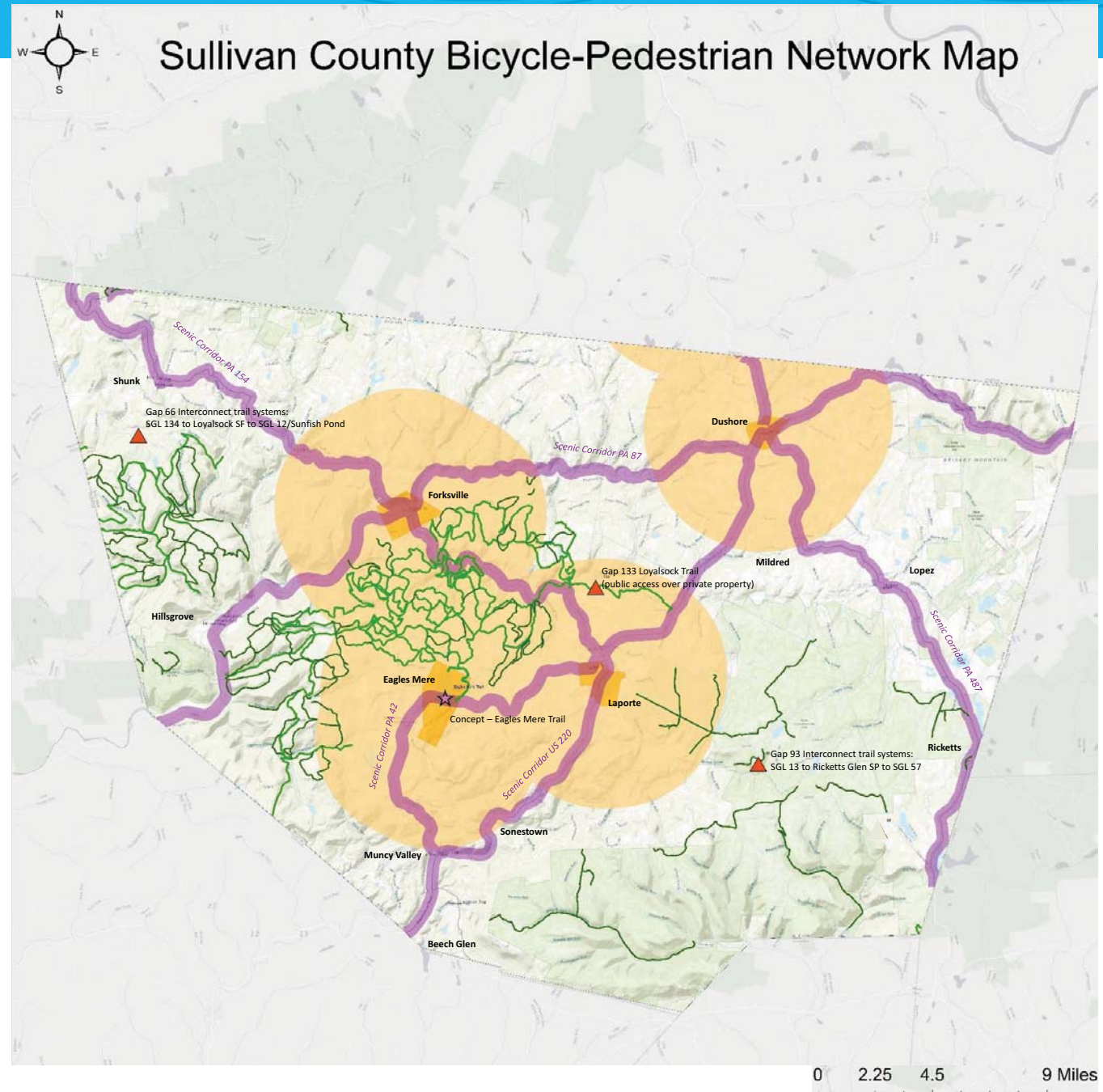
- ◆ Promote on-road **bicycling as a means of healthy, low cost-travel; share vision and plan** for improving facilities and conditions. – 0-2 years
- ◆ Develop and implement detailed **plans to improve the four Bicycle PA routes; assess scenic corridors as touring routes**; improve as feasible. – 0-5 years
- ◆ Assess **roads in and around towns** for bicycle use and barriers to use and safety; improve as feasible or re-direct use to alternative location. – Ongoing
- ◆ Evaluate **sidewalk and crosswalk conditions and pedestrian use** in towns and along roadways to the edge of town. – 0-5 years
- ◆ Develop **sidewalk extension and infill projects**; consider long-term maintenance. 0-2 years
- ◆ Centralize (or cross-reference) **online trail promotion**; count trail users. 0-2 years
- ◆ Educate interested municipalities on the **trail development process and** on relevant PennDOT and other state **programs**. – Ongoing
- ◆ Facilitate **networking among localized trail development groups** to share knowledge and experience. – Ongoing

# Sullivan County Bicycle-Pedestrian Network Map

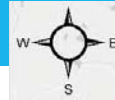


## Legend

- ▲ Known Trail Gaps (DCNR)
- ★ Trail Concepts
- Public Lands Trails
- Local and Regional Off-road Trails
- Scenic Corridors (to be assessed for bicycling touring)
- Priority Area for Local On-road Bicycle Facilities
- Communities with Sidewalk Systems



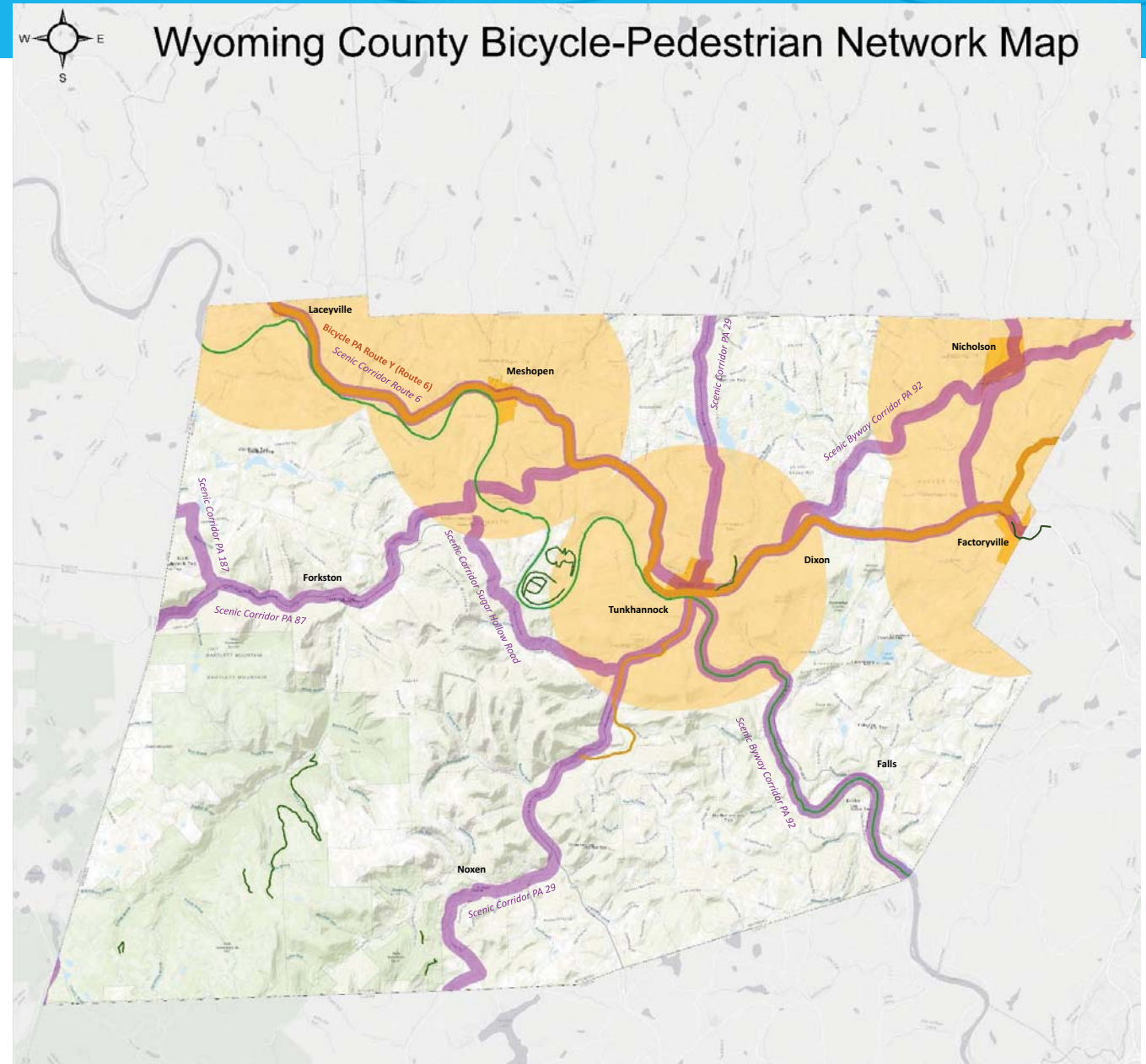




# Wyoming County Bicycle-Pedestrian Network Map

## Legend

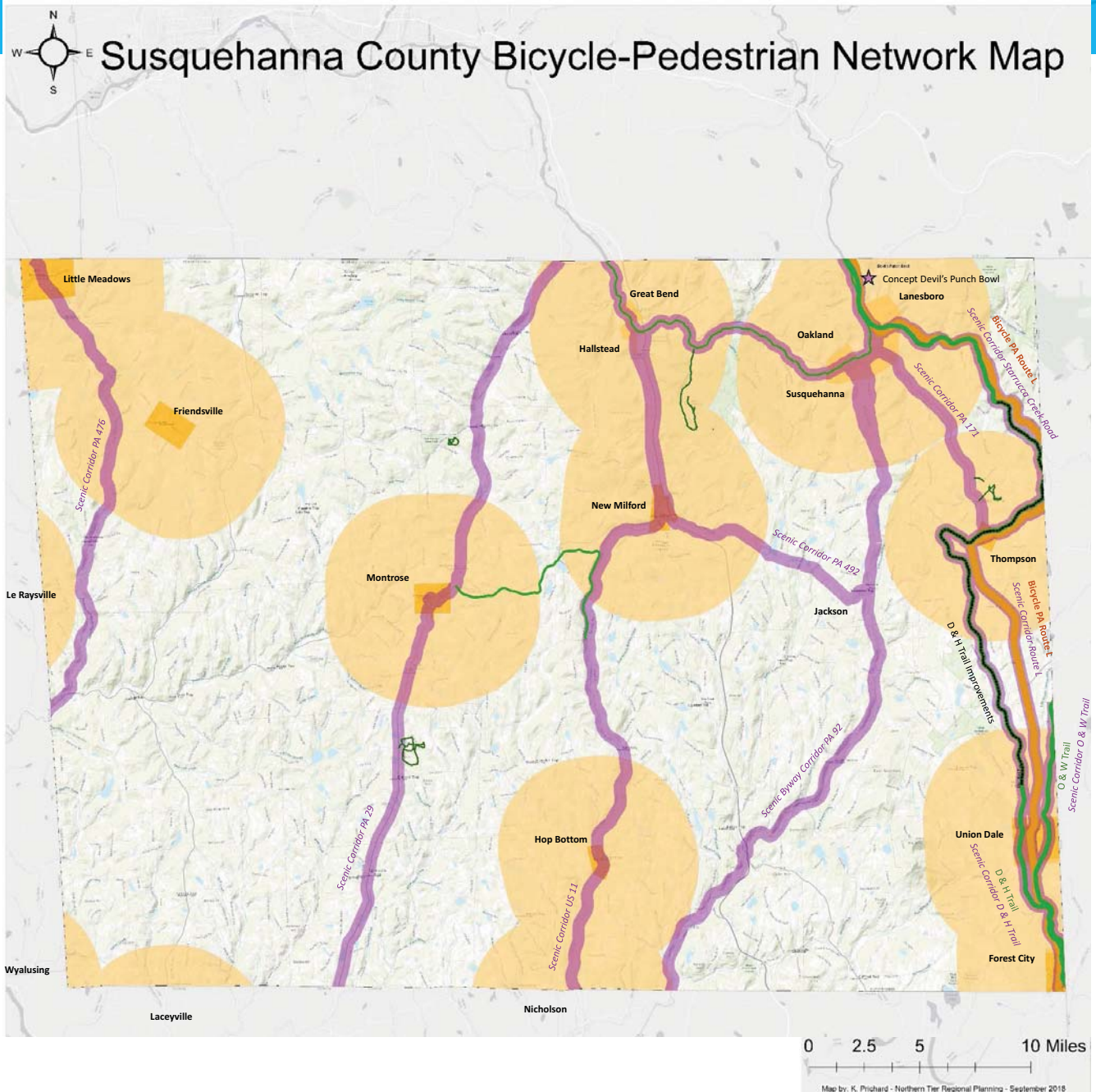
- Local and Regional Off-road Trails
- Public Lands Trails
- Local and Regional Bicycling Routes
- Bicycle PA Routes (bicycle touring routes)
- Scenic Corridors (to be assessed for bicycling touring)
- Priority Area for Local On-road Bicycle Facilities
- Communities with Sidewalk Systems



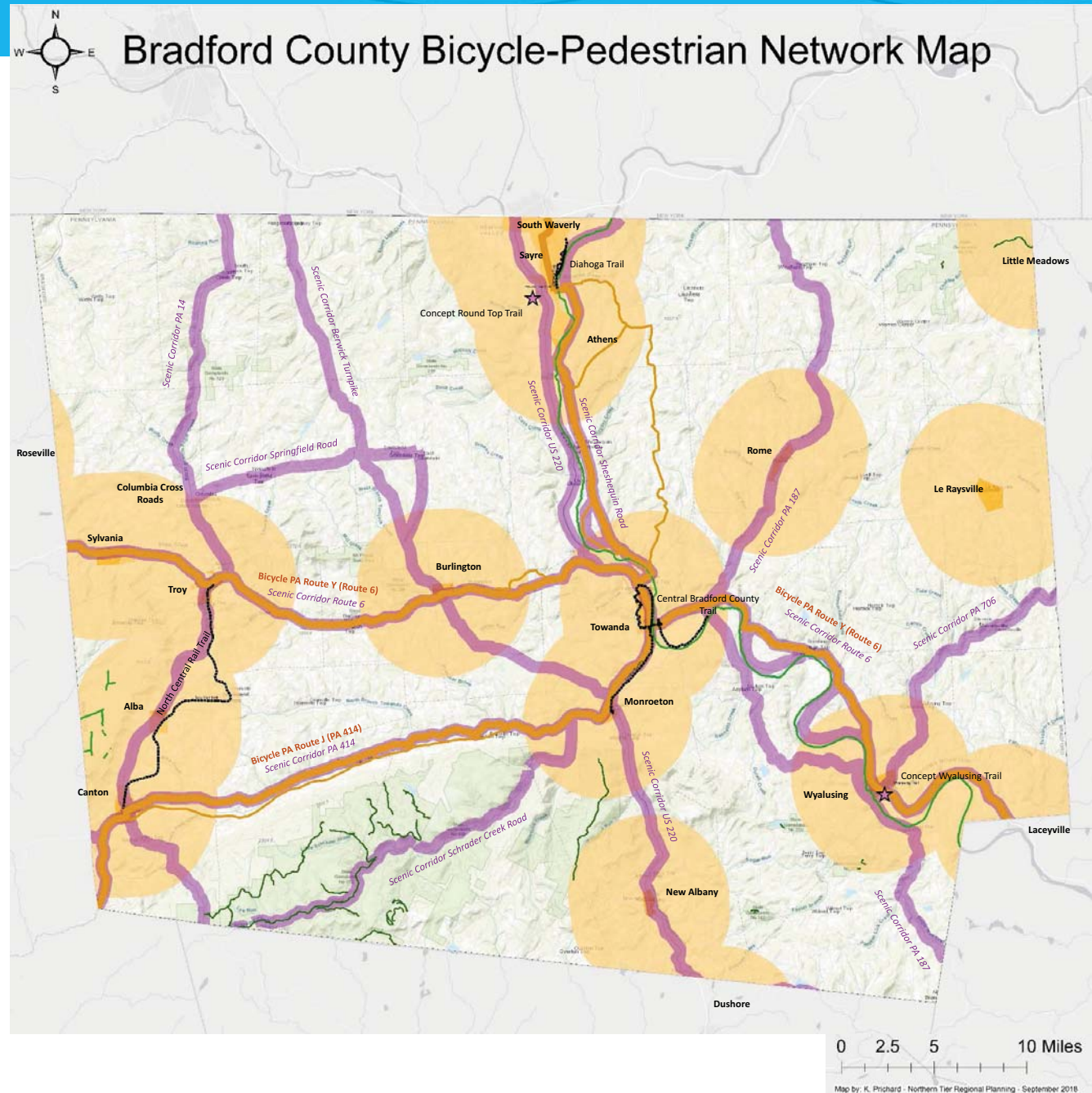
0 2 4 8 Miles

Map by: K. Prichard - Northern Tier Regional Planning - September 2018









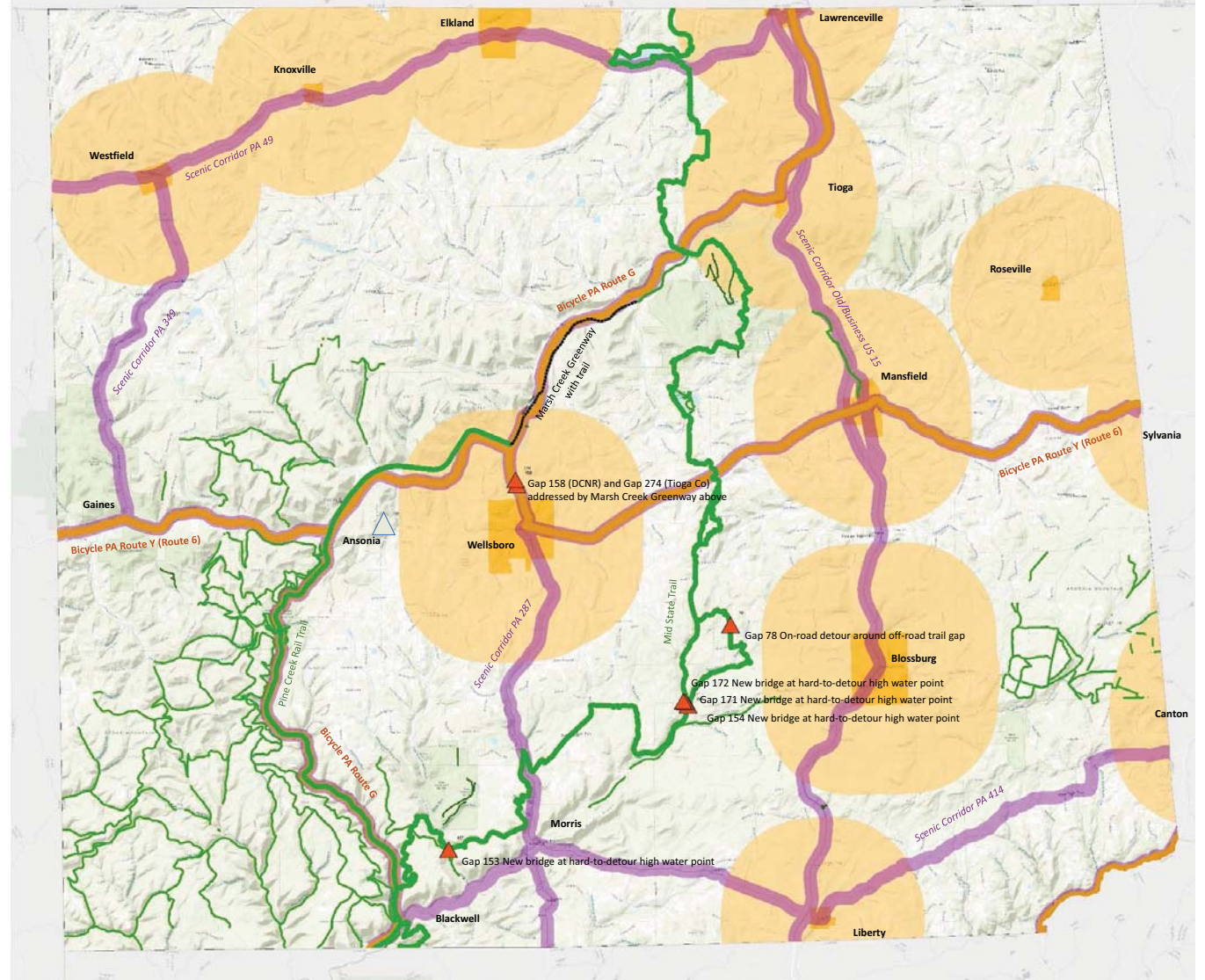




# Tioga County Bicycle-Pedestrian Network Map

## Legend

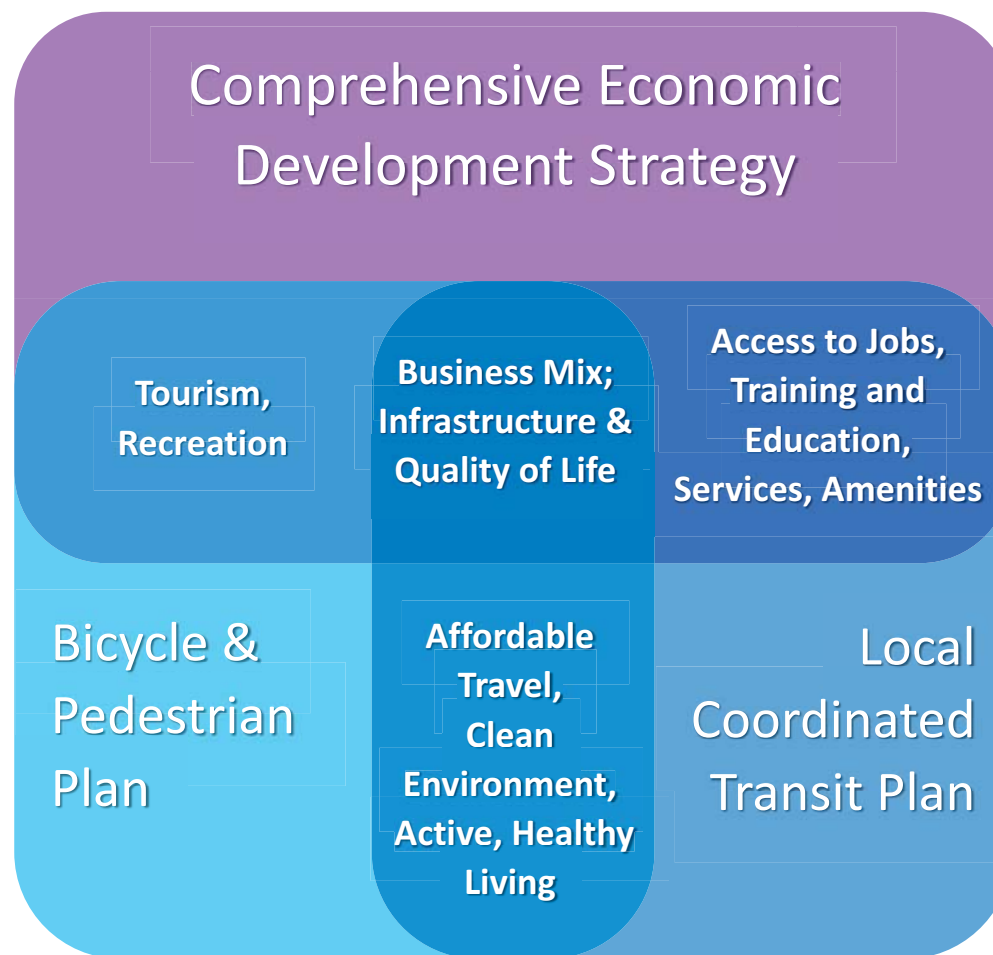
- ▲ Known Trail Gaps (DCNR)
- Proposed / Planned Trails (at various stages of development)
- Public Lands Trails
- Local and Regional Off-road Trails
- Major Off-road Trails
- Bicycle PA Routes (bicycle touring routes)
- Scenic Corridors (to be assessed for bicycling touring)
- Priority Area for Local On-road Bicycle Facilities
- Communities with Sidewalk Systems



0 2.5 5 10 Miles

Map by K. Prochard - Northern Tier Regional Planning - September 2018

# Overarching Themes



**Public Safety    Health and Wellness**

**Knowledge of what exists today and what's possible in the future**

**Partnerships to Leverage Resources**



# Questions, Comments

Michelle Brummer, Project Manager

Gannett Fleming, Inc.

717-649-3165

[mbrummer@gfnet.com](mailto:mbrummer@gfnet.com)