

# Eastern Oil and Gas Region

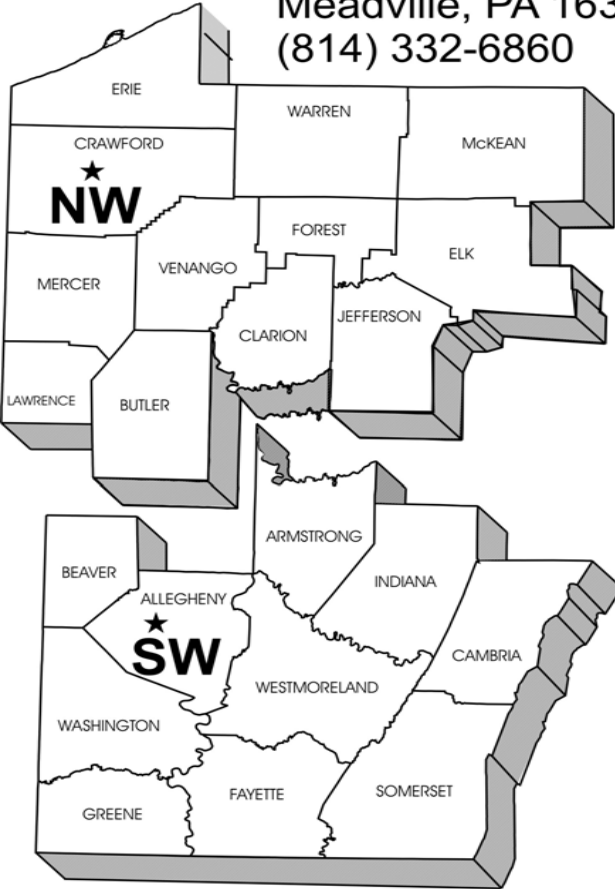
Jennifer Means

PA Department of Environmental  
Protection

# Oil and Gas Regions

## ★ Northwest Region

230 Chestnut Street  
Meadville, PA 16335-3481  
(814) 332-6860



## ★ Eastern Region

208 West Third Street  
Williamsport, PA 17701-6448  
(570) 321-6550



## ★ Southwest Region

400 Waterfront Drive  
Pittsburgh, PA 15222-4745  
(412) 442-4024

## ● Central Office

Bureau of Oil and Gas Management  
PO Box 8765  
Harrisburg, PA 17105-8765  
(717) 772-2199

**Environmental Program Manager  
Jennifer Means**

**Clerk Typist 1  
Marie McHenry**

**Env Prot Compliance Spst  
Marc Cooley**

**Geologic Trn  
Caleb Woolever**

**Env Engrg Trn  
Jeremy Rusczyk**

**Wtr Poll Biologist 2  
Andrew Klinger**

**WQ Specialist Supervisor  
John Ryder**

**WQ Specialist  
Vacant**

**WQ Specialist  
Jessica Miller  
Moshannon**

**Env Trainee  
Vacant - Mansfield**

**Env Trainee  
Mark Barbier**

**WQ Specialist  
Mike O'Donnell  
Wilkes-Barre**

**Oil & Gas Specialist Supervisor  
Bruce Jankura**

**Oil & Gas Inspector  
Vacant  
Moshannon**

**Oil & Gas Inspector  
Steve Watson  
Wilkes-Barre**

**Oil & Gas Inspector  
Vacant  
Mansfield**

**Oil & Gas Inspector  
Jim Cover**

# Gas Drilling & Water Resources

- Stormwater
  - Construction
  - Post-construction
- Stream/Wetland Encroachments
- Chemical storage
- Drilling
- Water use
- Wastewater disposal

# Eastern Region Responsibilities

# Stormwater

- Construction
  - Erosion and Sedimentation
  - Required: **E&S plan, possibly ESCGP-1**
- Post-Construction
  - Increase stormwater runoff due to increase in impervious area (well pads, roads)
  - Required: **Post-Construction Stormwater Management Plan/Site Restoration plan**

# Stream/Wetland Encroachments

- Need to cross streams and/or wetlands with access roads, gathering lines, etc.
- Potential impact to habitat
- Potentially effect stormwater conveyance
- Required: **General permit or Joint permit from the Department for these activities**

# Chemical Storage and Use

- Chemicals stored on site and used during drilling and hydrofracturing
- Potential for spills- impacts to soil, surface water, groundwater
- Required: **Preparedness, Prevention, and Contingency plan (PPC plan)**
- Requires notification of Department and others
- Clean-up/remediation of spills required



# Drilling

## Eastern Region:

- Complaint investigations, inspections, compliance and enforcement

# Water Use

- Hydraulic fracturing (“fracing”) uses large quantities of water (+/- 5 million gallons)
- Potential impacts of water withdrawals to surface water and ground water
- Required: **Water Management plan approved by DEP**
- SRBC approval if within Susquehanna River basin
- DRBC approval if within Delaware River basin

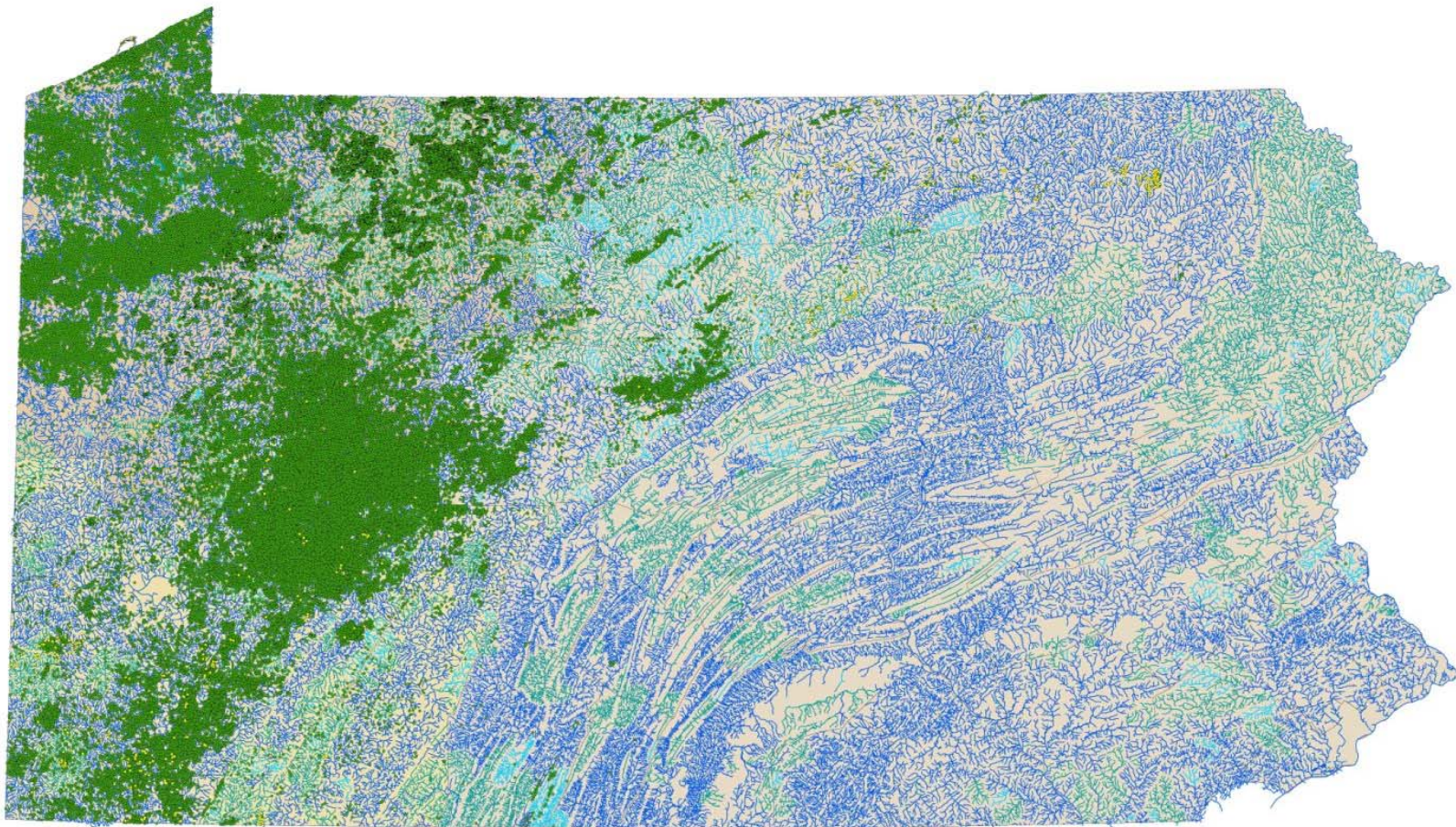
# Wastewater Disposal

- Portion of water used during hydraulic fracturing returns to the surface as “flowback”
- Potential impacts to surface and ground water if improperly disposed
- Required:
  - Identify disposal facilities in “Control and Disposal” part of PPC plan
  - Residual waste- must follow all reporting requirements and list disposal facility on site restoration report (Waste Management Program)
  - Treatment Plants need DEP approval to accept waste (Water Management Program)

# Challenges

- Staffing
- Building a new program
- Volume and rate of activity
- Technology





**Legend**

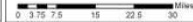
- State/Marcellus Wells
- Oil and Gas Well

**Designated Use Streams**

- All Other Uses
- Exceptional Value
- High Quality

**Oil and Gas Regions**

- NCRO
- NWRO
- SWRO



Commonwealth of Pennsylvania  
Department of Environmental Protection  
Division of Water

The user shall own the Commonwealth's database for any data, items, or tables being out of the use of the State files or accompanying this information, or arising out of or collected in the database or accompanying documentation.  
The Commonwealth warrants only that all digital information is of reasonable accuracy as represented with respect to the data files or accompanying documentation, including quality performance, response time, or fit for a particular purpose. These files may not be distributed or modified, and the user assumes the entire responsibility for their quality and performance.



Northcentral Regional Office

# Statewide Wells